

### PREPARATION

#### Required Material

- Computer with Internet connection
- E-Tech M electrical boiler - not connected to power supply
- Empty USB stick - FAT 32 formatted - max 32 Go



#### General remark

When formatting a USB stick, be aware that all information it contains will be deleted. Please check out the Internet to find more information on how to proceed to correctly format a USB stick.

#### USB stick Set-up

1. Connect the USB stick to your computer and make sure that it appears in the file manager.
2. Connect to <https://www.acv.com/international/page/usb-key-flash> or scan the QR code below for quick access.
3. Download the latest version of the E-Tech M Controller & display software (.zip files) to your computer.

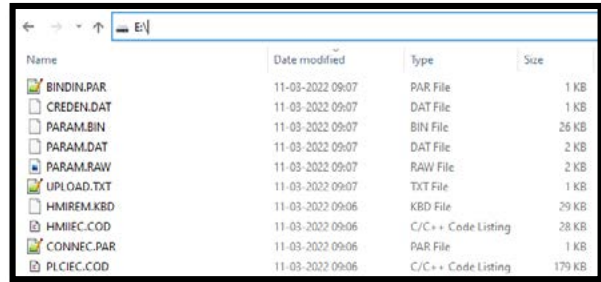


#### General remark

- Two types of files are available : one for the controller and one for the display. Check on your E-Tech M appliance what is the current version. Download a new one as required.
- Display version is shown at start-up
- Controller version is displayed on the setting menu page. Refer to the Installation, Operation and Maintenance Manual of the boiler.

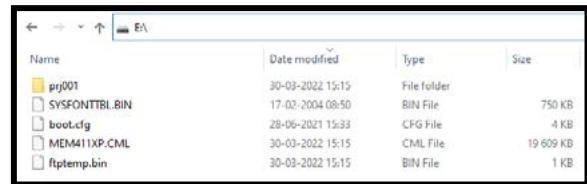
4. Extract the zipped files to the root of the USB drive.

- Example of extracted files for the controller :



Name	Date modified	Type	Size
BINDIN.PAR	11-03-2022 09:07	PAR File	1 KB
CREDEN.DAT	11-03-2022 09:07	DAT File	1 KB
PARAM.BIN	11-03-2022 09:07	BIN File	26 KB
PARAM.DAT	11-03-2022 09:07	DAT File	2 KB
PARAM.RAW	11-03-2022 09:07	RAW File	2 KB
UPLDAD.TXT	11-03-2022 09:07	TXT File	1 KB
HMIREFM.KBD	11-03-2022 09:06	KBD File	29 KB
HMIIEC.COD	11-03-2022 09:06	C/C++ Code Listing	28 KB
CONNEX.PAR	11-03-2022 09:06	PAR File	1 KB
PLCIEC.COD	11-03-2022 09:06	C/C++ Code Listing	170 KB

- Example of extracted files for the display

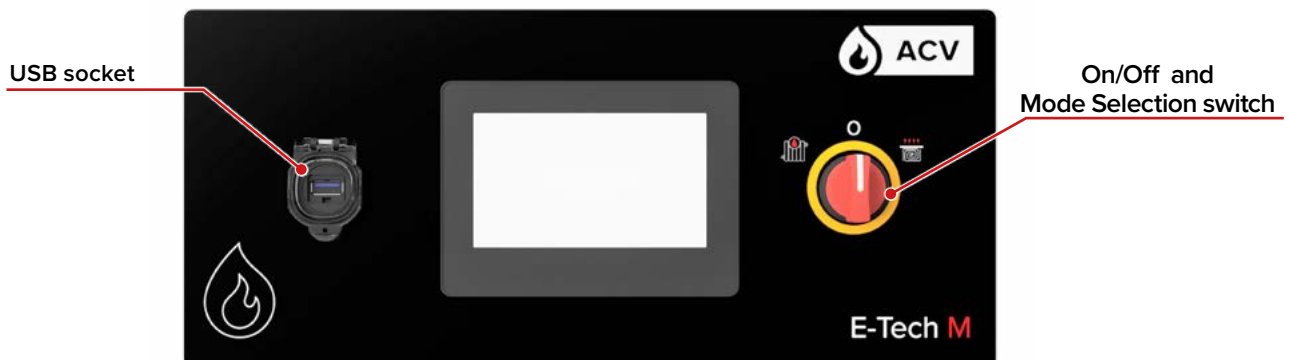


Name	Date modified	Type	Size
prj001	30-03-2022 15:15	File folder	
SYSFONITBL.BIN	17-02-2004 08:50	BIN File	750 KB
boot.cfg	28-06-2021 15:33	CFG File	4 KB
MEMM41XP.CML	30-03-2022 15:15	CML File	19 609 KB
flptemp.bin	30-03-2022 15:15	BIN File	1 KB

5. Dismount USB stick from the computer.

### CONTROLLER UPDATE

1. Make sure that your E-Tech M boiler is turned OFF (power supply button in central position).
2. Connect the E-Tech M boiler to power supply.
3. Install USB stick into the socket on front panel.
4. Turn the boiler ON by turning the selection switch to the left or to the right.
5. At start-up, the controller will read the USB stick and perform the update.
6. After about 2 minutes, the appliance will restart automatically.
7. Remove the USB stick.
8. Restart the appliance to remove any remaining errors.



## DISPLAY UPDATE

1. Make sure that your E-Tech M boiler is disconnected from power supply.
2. Release top panel from the boiler. Refer to the Installation, Operation and Maintenance Manual of the boiler for the correct procedure.

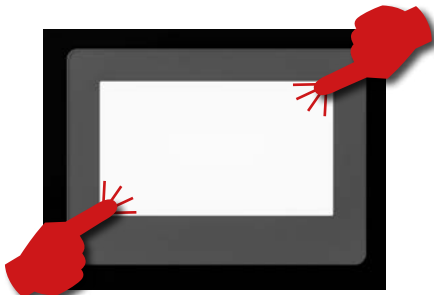
**i** Make sure to hold the panel firmly while removing it gently, as cables are connected at the back. Do not disconnect the cables at the back.

3. Position the panel vertically and securely on top of the boiler, without pulling on the cables. Make sure it is cannot fall.
4. Plug the USB stick into the socket at the back of the screen.



The following steps require power to be turned ON. Be careful not to touch any components as there is a risk of electric shock. Failure to comply can result in injuries or damage to equipment.

5. Connect the E-Tech M boiler to power supply.
6. Turn the boiler ON by turning the selection switch to the left or to the right.
7. Enter the system menu by touching the top-right corner then the bottom-left corner (or the reverse) of the display within 0.5 seconds.



**i** Strictly follow the instructions provided herein and do not access/change any other parameters than those indicated in this procedure. Failure to comply will make any warranty void.

8. A menu bar is displayed at the bottom of the screen. With the arrow key, change page until you reach the “USBStart” function.



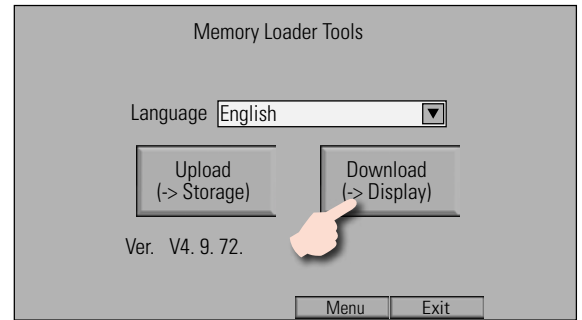
9. Touch the “USBStart” key.



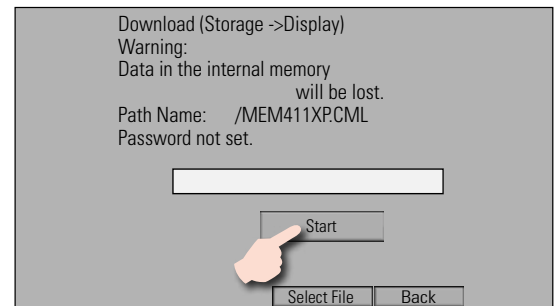
10. Touch the “USBStart” key.



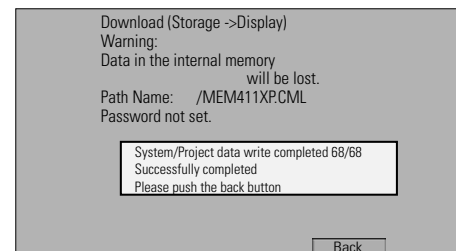
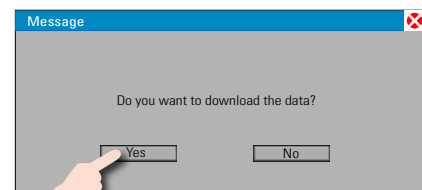
11. The “Memory Loader Tool” screen appears.
12. Touch “Download (“-> Display)” function.



13. Touch “Start” to initiate the process, No password is required. Then validate the transfer (Flash).



14. Confirm your download by clicking on “Yes”, then follow the instructions on the screen.



15. Once the process is finished, Exit the menus.
16. Shut down the boiler and disconnect power supply.
17. Remove the USB stick from the socket at the back.
18. Reinstall the top panel, making sure to slide the cables on the side to store them correctly when reinstalling the panel. Refer to the Installation, Operation and Maintenance Manual of the boiler for the correct procedure.